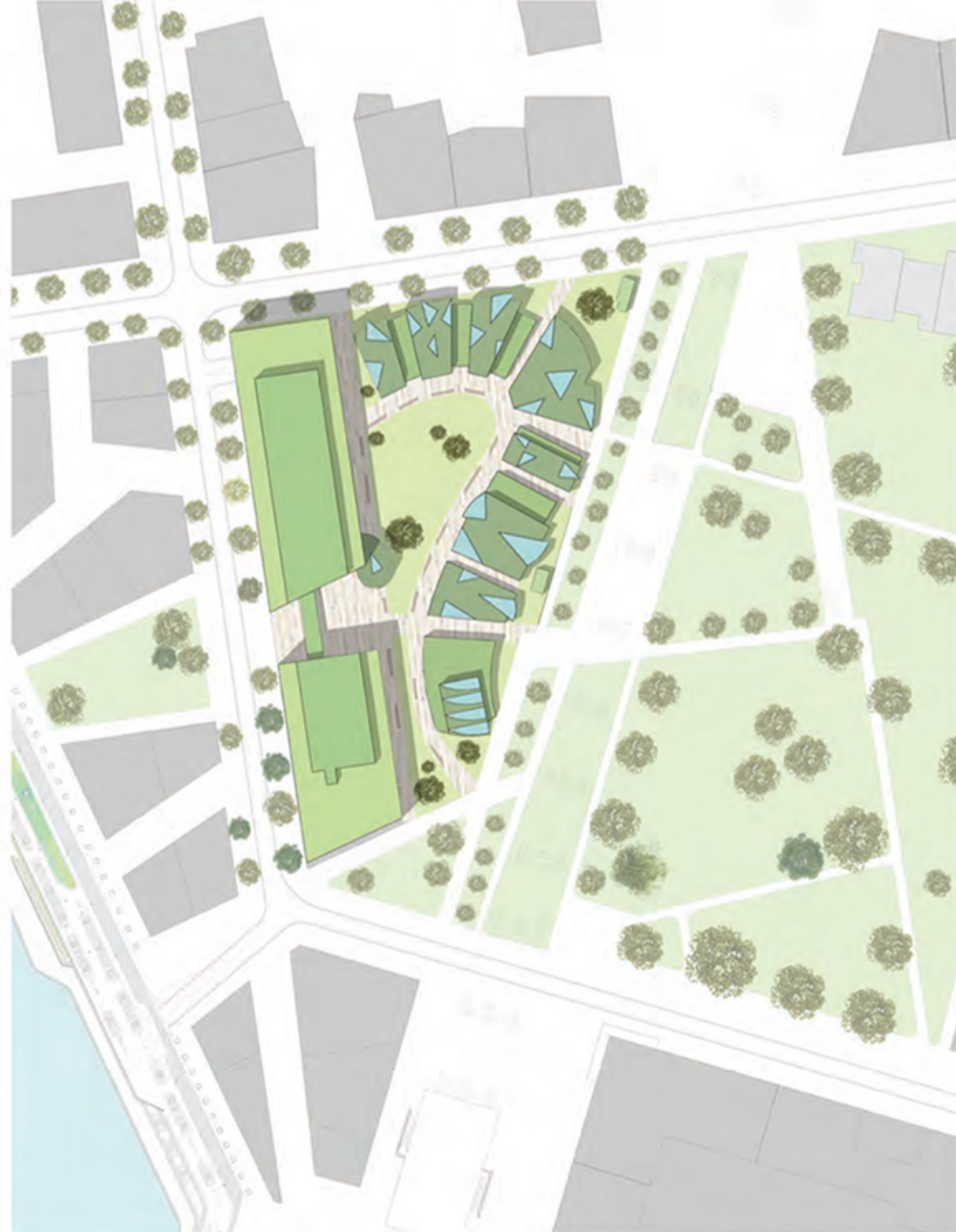




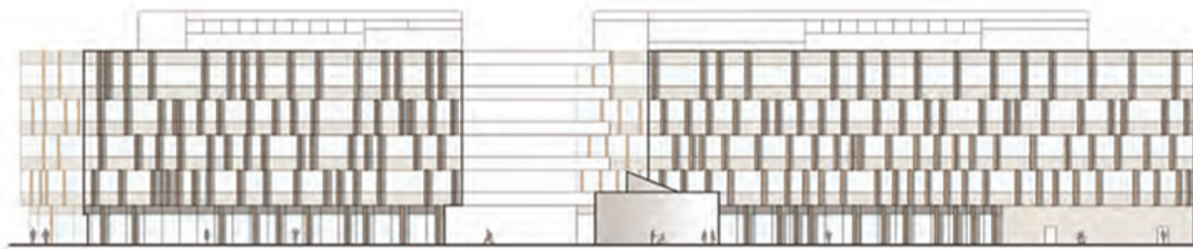
Ⓝ ALLGEMEINER STRUKTURPLAN 1:1000



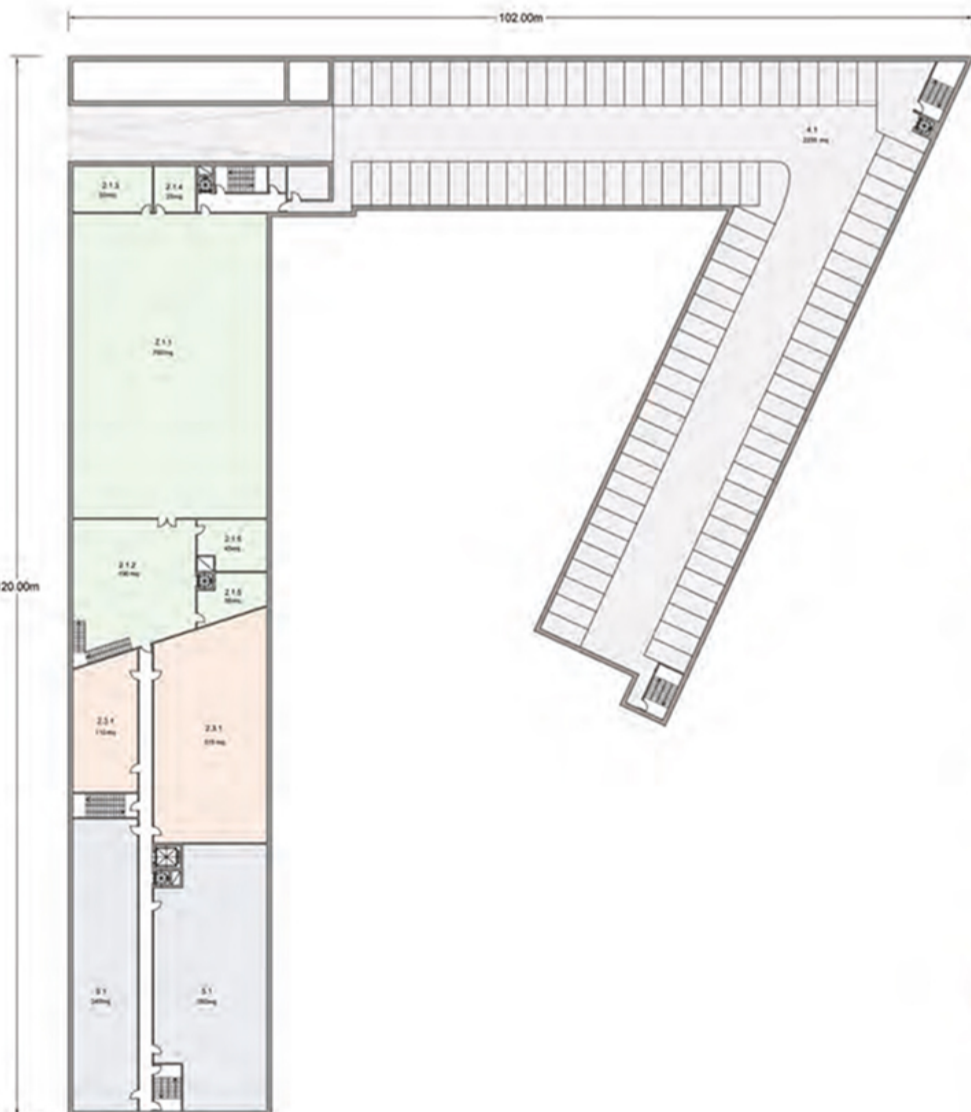
Ⓝ LAGEPLAN 1:500



SAKRALBAUTEN WESTANSICHT 1:250
(INNENHOF)



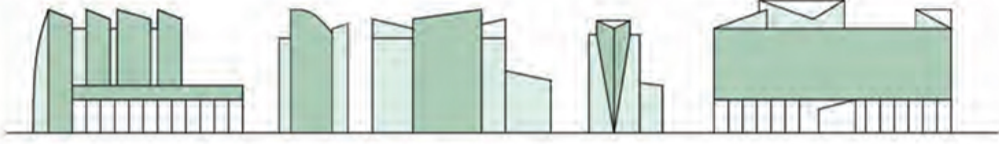
KPH OSTANSICHT 1:250
(INNENHOF)



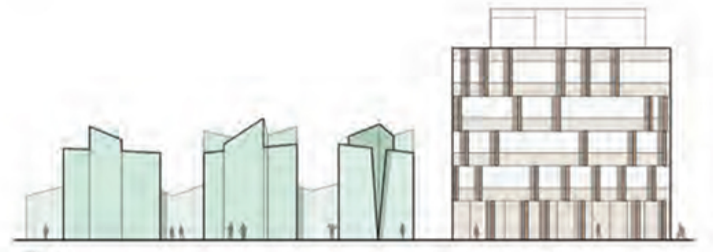
GRUNDRISS UNTERGESCHOSS 1:250



GRUNDRISS ERDGESCHOSS 1:250



SAKRALBAUTEN OSTANSICHT 1:250



SAKRALBAUTEN SÜDANSICHT 1:250
(INNENHOF)



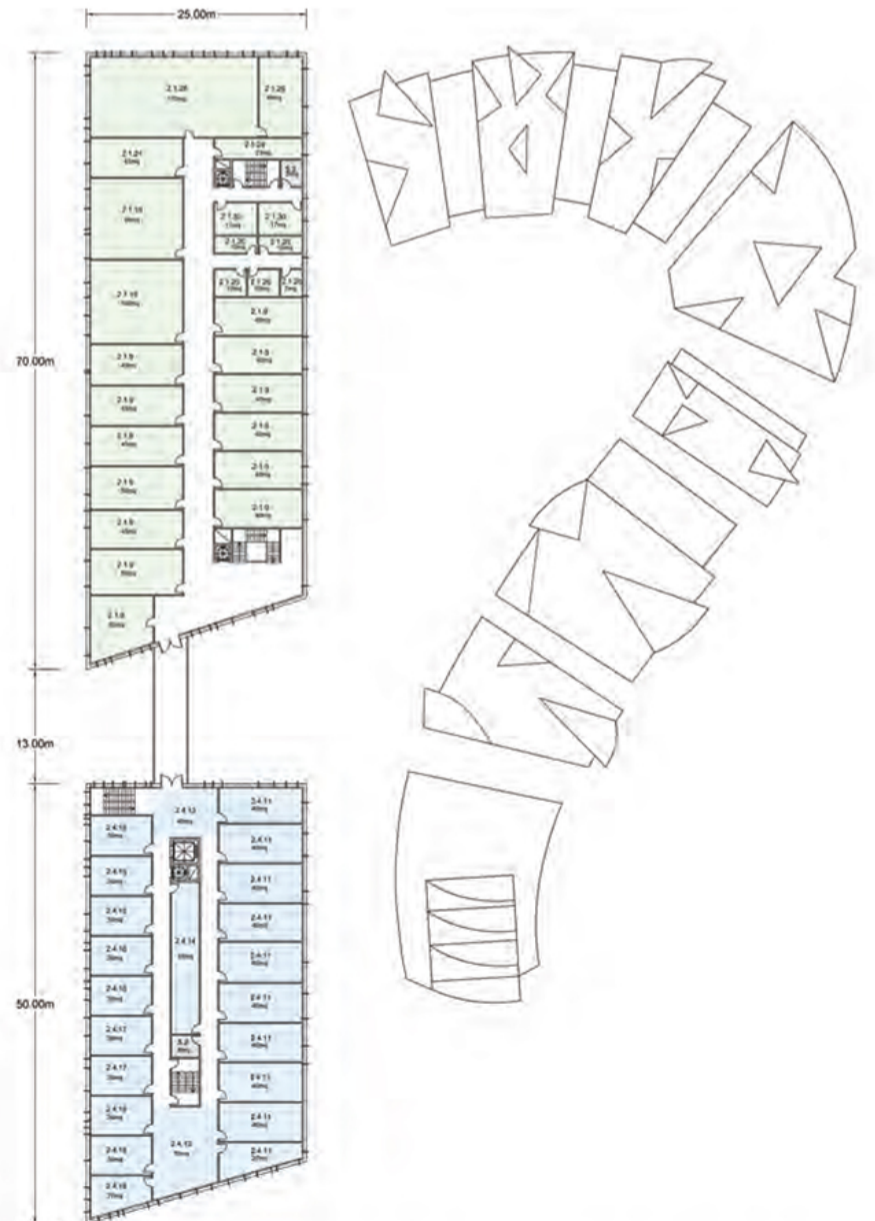
KPH WESTANSICHT 1:250



SÜDANSICHT 1:250



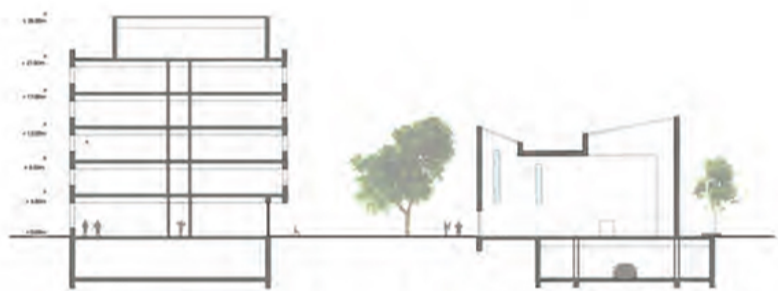
GRUNDRISS ERSTE GESCHOSS 1:250



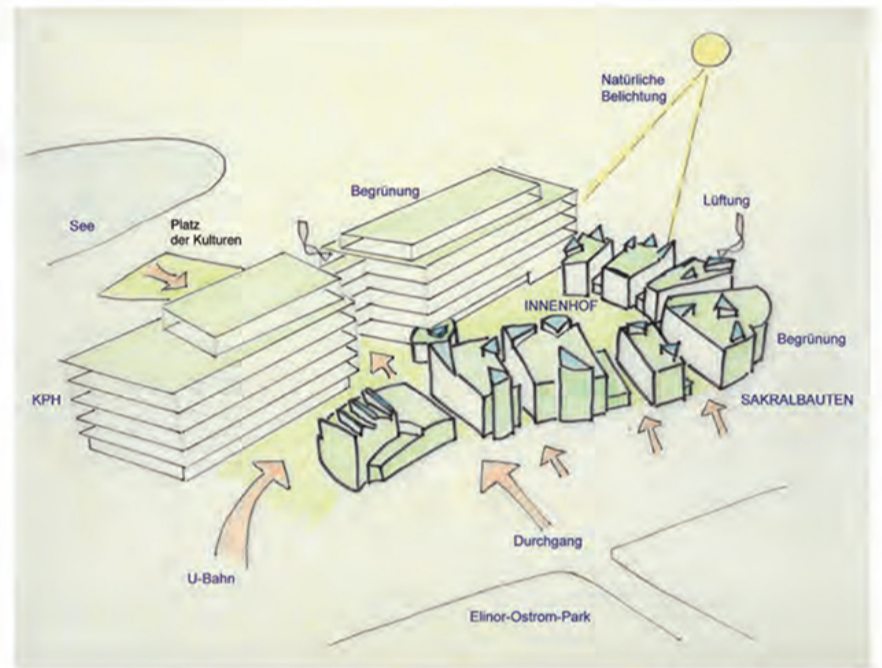
GRUNDRISS ZWEITE GESCHOSS 1:250



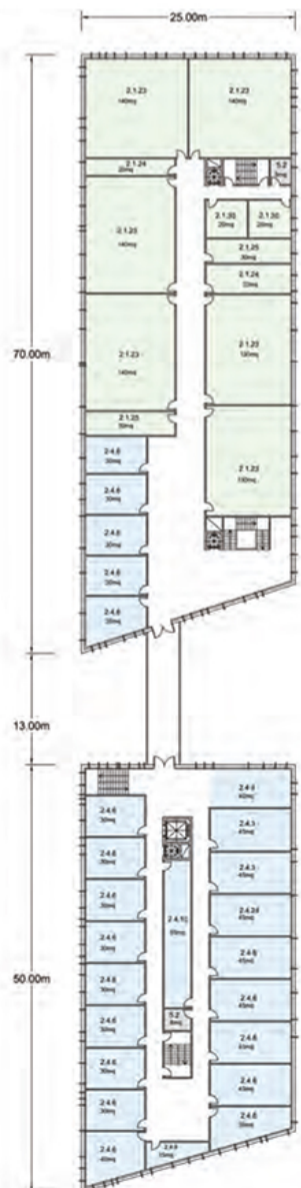
SCHNITTE B-B 1:250



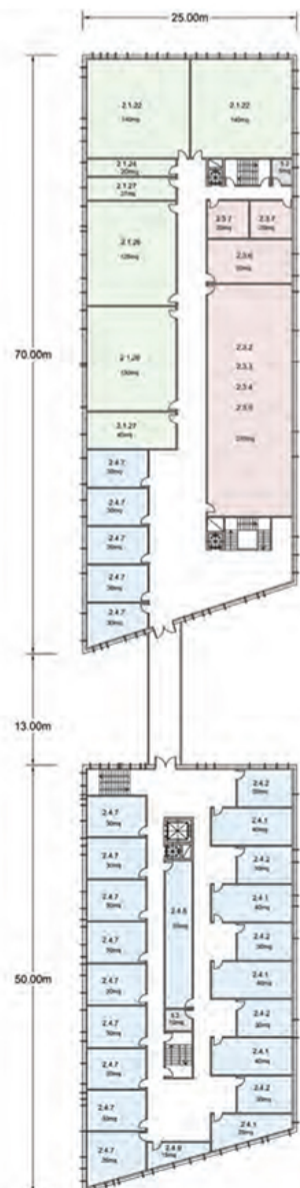
SCHNITTE A-A 1:250



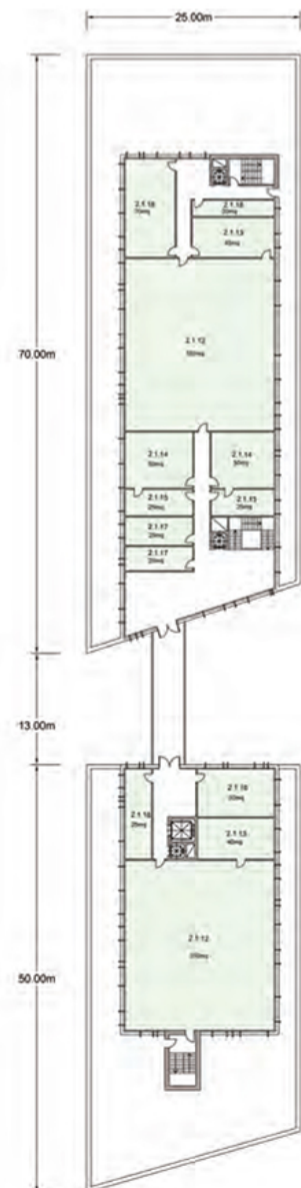
DIAGRAMM



GRUNDRISS DRITTE GESCHOSS
1:250



GRUNDRISS FIERTE GESCHOSS
1:250



GRUNDRISS DACHGESCHOSS
1:250